

BancFirst Tower

100 N Broadway Ave., Oklahoma City, OK 73102



OFFERING SUMMARY

Available SF: 381 - 11,446 SF

Lease Rate: Varies based on level of suite customization

Lease Type: Full Service

Building Size 507,038

Renovated: 2020

Submarket: CBD

PROPERTY HIGHLIGHTS

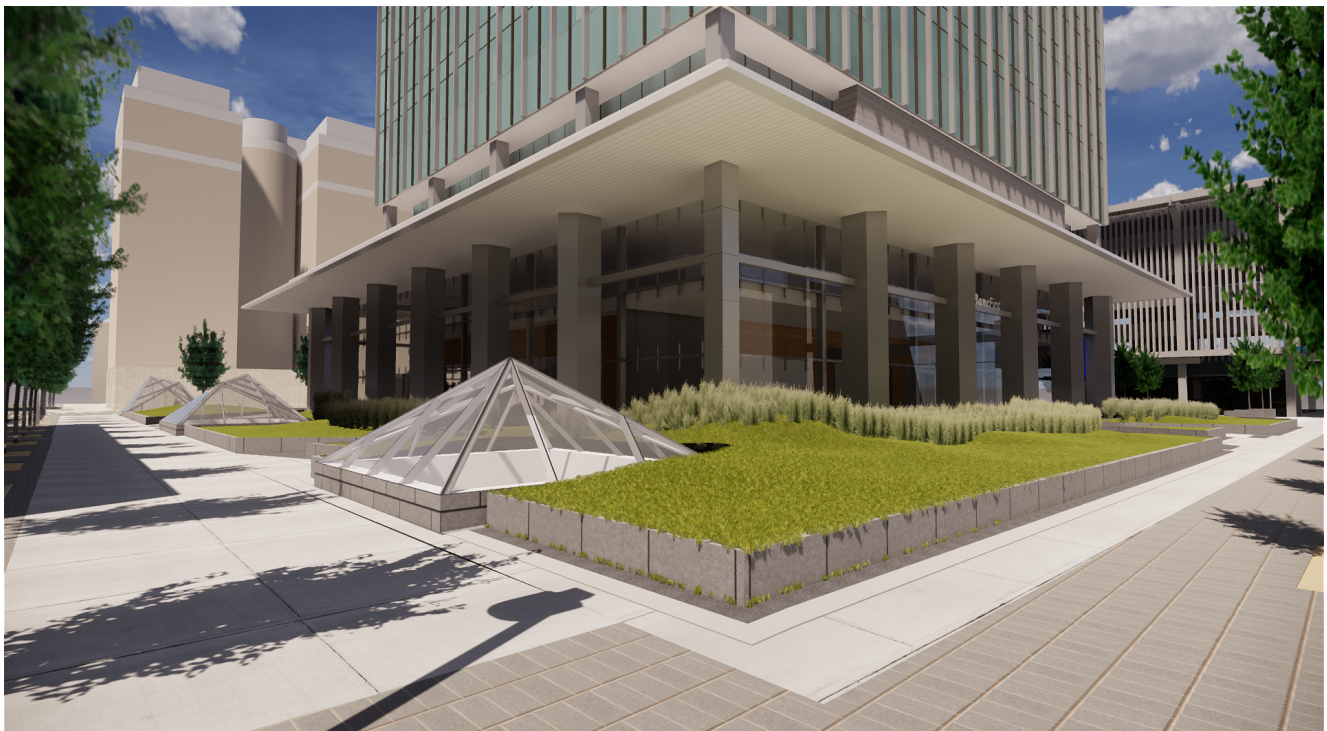
- Future home to BancFirst with banking facility on-site
- Multi-million dollar renovation
- Petroleum Club located on 34th floor
- Covered parking to accommodate companies of all sizes
- On-site engineering and management offices
- Streetcar accessible
- Connected to The Underground
- 24/7 on-site security

TRE DUPUY
405.239.1210
tdupuy@priceedwards.com
priceedwards.com

IAN SELF
405.239.1271
iself@priceedwards.com
priceedwards.com

BancFirst Tower

100 N Broadway Ave., Oklahoma City, OK 73102

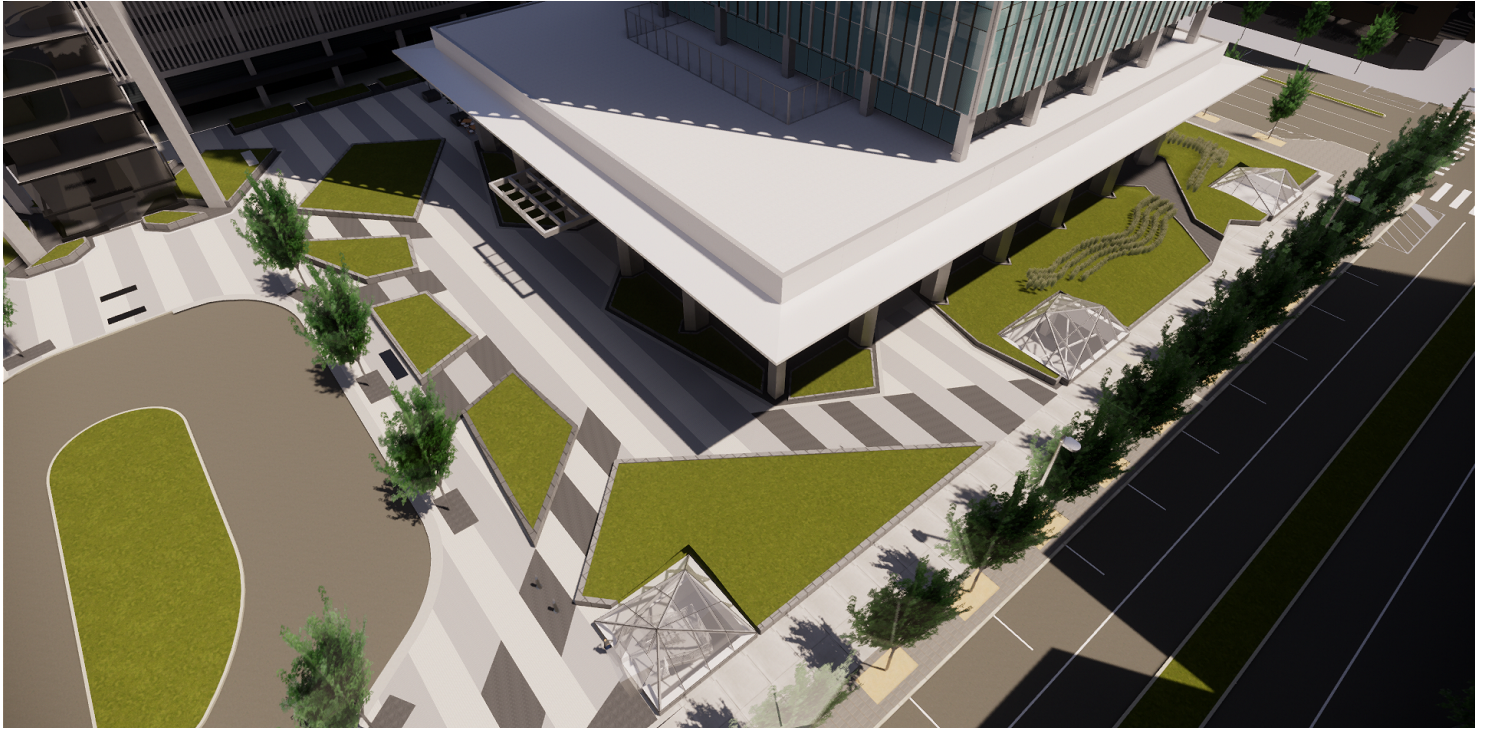


TRE DUPUY
405.239.1210
tdupuy@priceedwards.com
priceedwards.com

IAN SELF
405.239.1271
iself@priceedwards.com
priceedwards.com

BancFirst Tower

100 N Broadway Ave., Oklahoma City, OK 73102



TRE DUPUY
405.239.1210
tdupuy@priceedwards.com
priceedwards.com

IAN SELF
405.239.1271
iself@priceedwards.com
priceedwards.com

BancFirst Tower

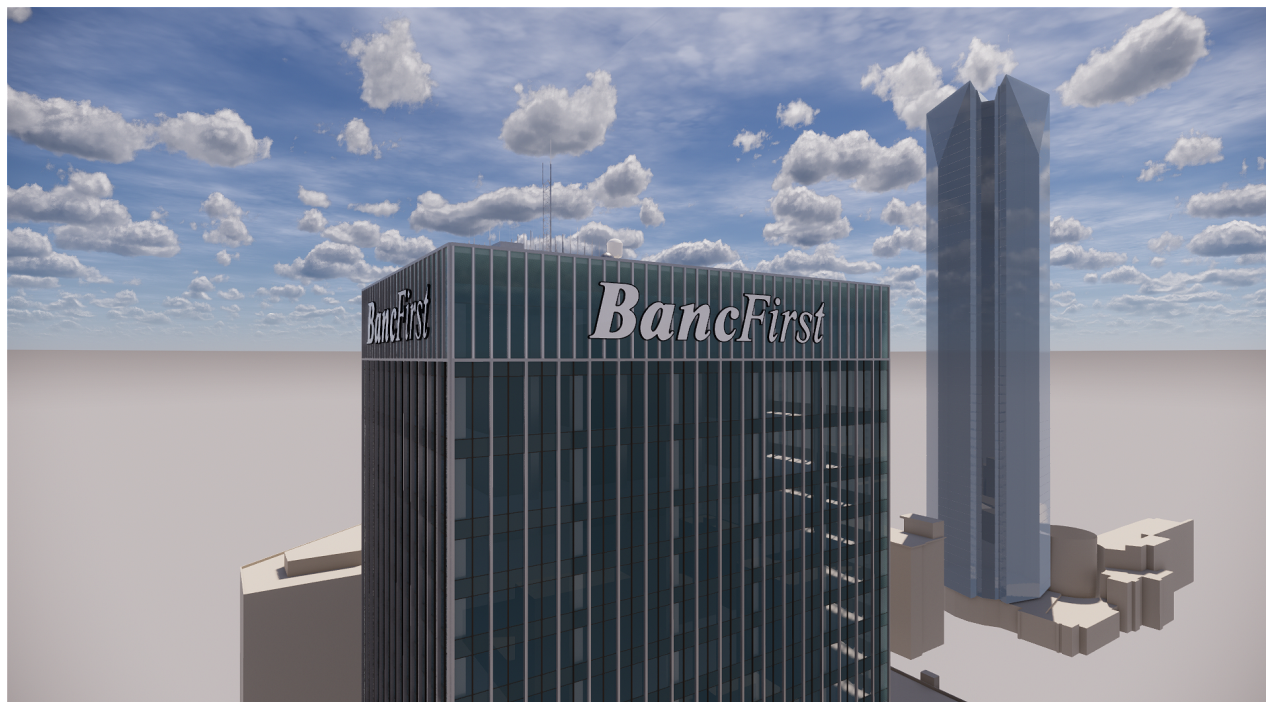
100 N Broadway Ave., Oklahoma City, OK 73102

LEASE TYPE | Full Service

TOTAL SPACE | 381 - 11,446 SF

LEASE TERM | Negotiable

LEASE RATE | \$18.50 SF/yr



SUITE	TENANT	SIZE (SF)	LEASE TYPE	LEASE RATE
Suite 2110	Available	4,576 SF	Full Service	\$18.50 SF/yr
Suite 2010	Available	2,647 SF	Full Service	\$18.50 SF/yr
Suite 2120	Available	2,780 SF	Full Service	\$18.50 SF/yr
Suite 2400	Available	2,201 SF	Full Service	\$18.50 SF/yr
Suite 2750	Available	4,843 SF	Full Service	\$18.50 SF/yr
Suite 3230	Available	752 SF	Full Service	\$18.50 SF/yr
Suite 3030	Available	6,262 SF	Full Service	\$18.50 SF/yr
Suite 3150	Available	4,621 SF	Full Service	\$18.50 SF/yr
Suite 3250	Available	2,706 SF	Full Service	\$18.50 SF/yr
Suite 2000	Available	11,446 SF	Full Service	\$18.50 SF/yr
Suite 1890	Available	520 SF	Full Service	\$18.50 SF/yr

TRE DUPUY
405.239.1210
tdupuy@priceedwards.com
priceedwards.com

IAN SELF
405.239.1271
iself@priceedwards.com
priceedwards.com

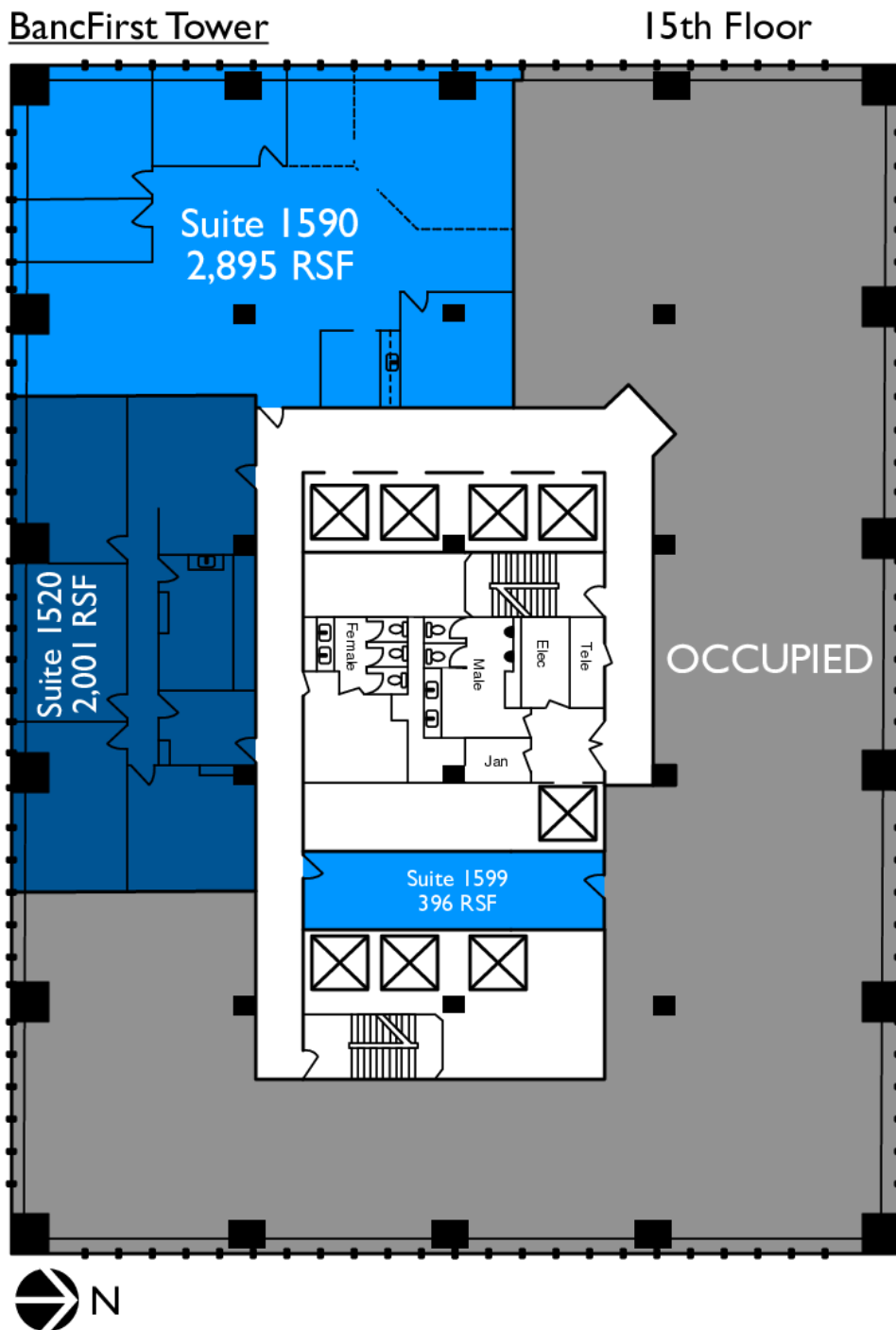
BancFirst Tower

100 N Broadway Ave., Oklahoma City, OK 73102

SUITE	TENANT	SIZE (SF)	LEASE TYPE	LEASE RATE
Suite 2250	Available	984 SF	Full Service	\$18.50 SF/yr
Suite 2270	Available	1,182 SF	Full Service	\$18.50 SF/yr
Suite 2275	Available	381 SF	Full Service	\$18.50 SF/yr
Suite 2300	Available	3,175 SF	Full Service	\$18.50 SF/yr
Suite 2420	Available	2,465 SF	Full Service	\$18.50 SF/yr
Suite 2430	Available	600 SF	Full Service	\$18.50 SF/yr
Suite 2470	Available	3,217 SF	Full Service	\$18.50 SF/yr

TRE DUPUY
405.239.1210
tdupuy@priceedwards.com
priceedwards.com

IAN SELF
405.239.1271
iself@priceedwards.com
priceedwards.com



TRE DUPUY
405.239.1210
tdupuy@priceedwards.com
priceedwards.com

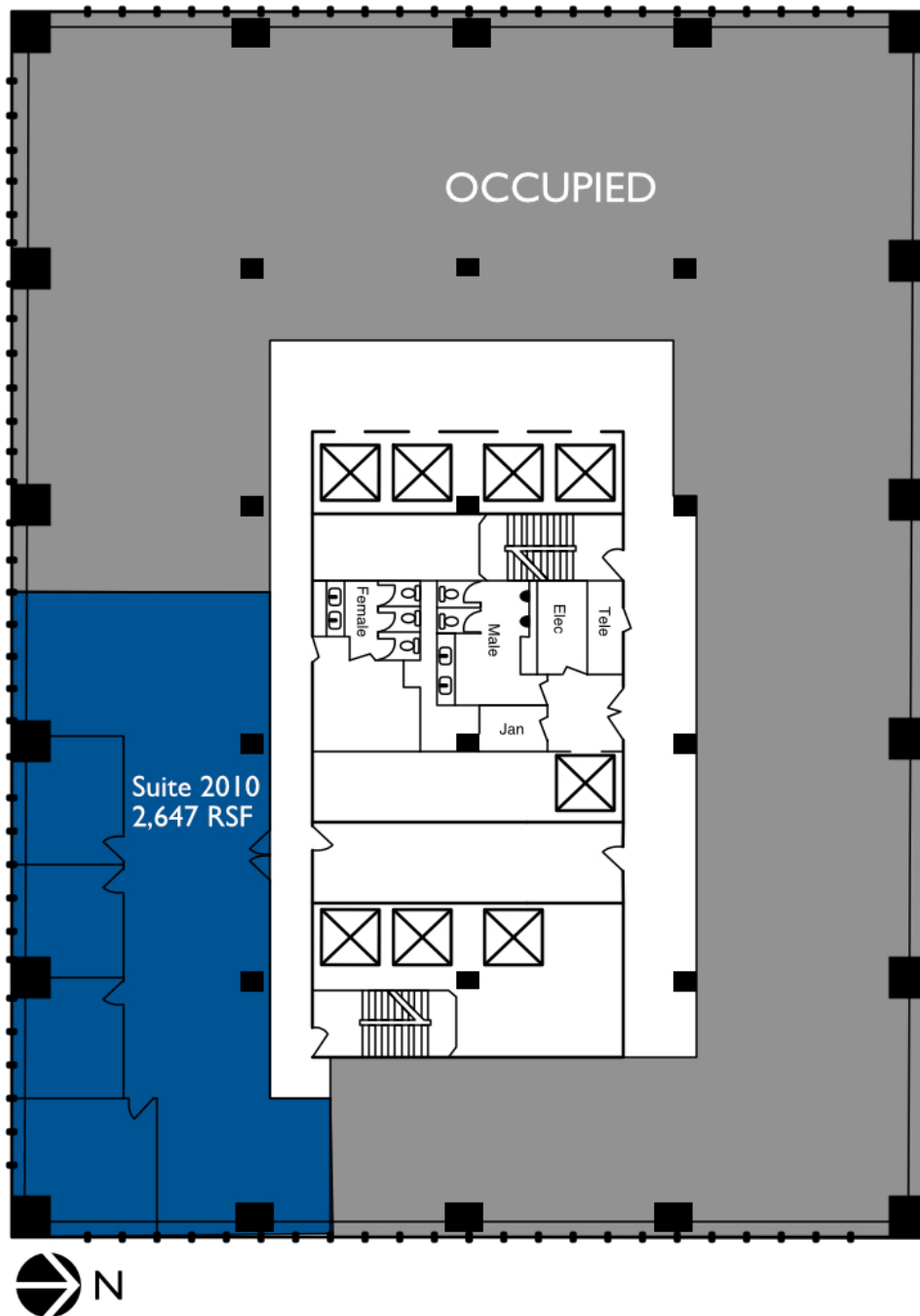
IAN SELF
405.239.1271
iself@priceedwards.com
priceedwards.com

BancFirst Tower

100 N Broadway Ave., Oklahoma City, OK 73102

BancFirst Tower

20th Floor

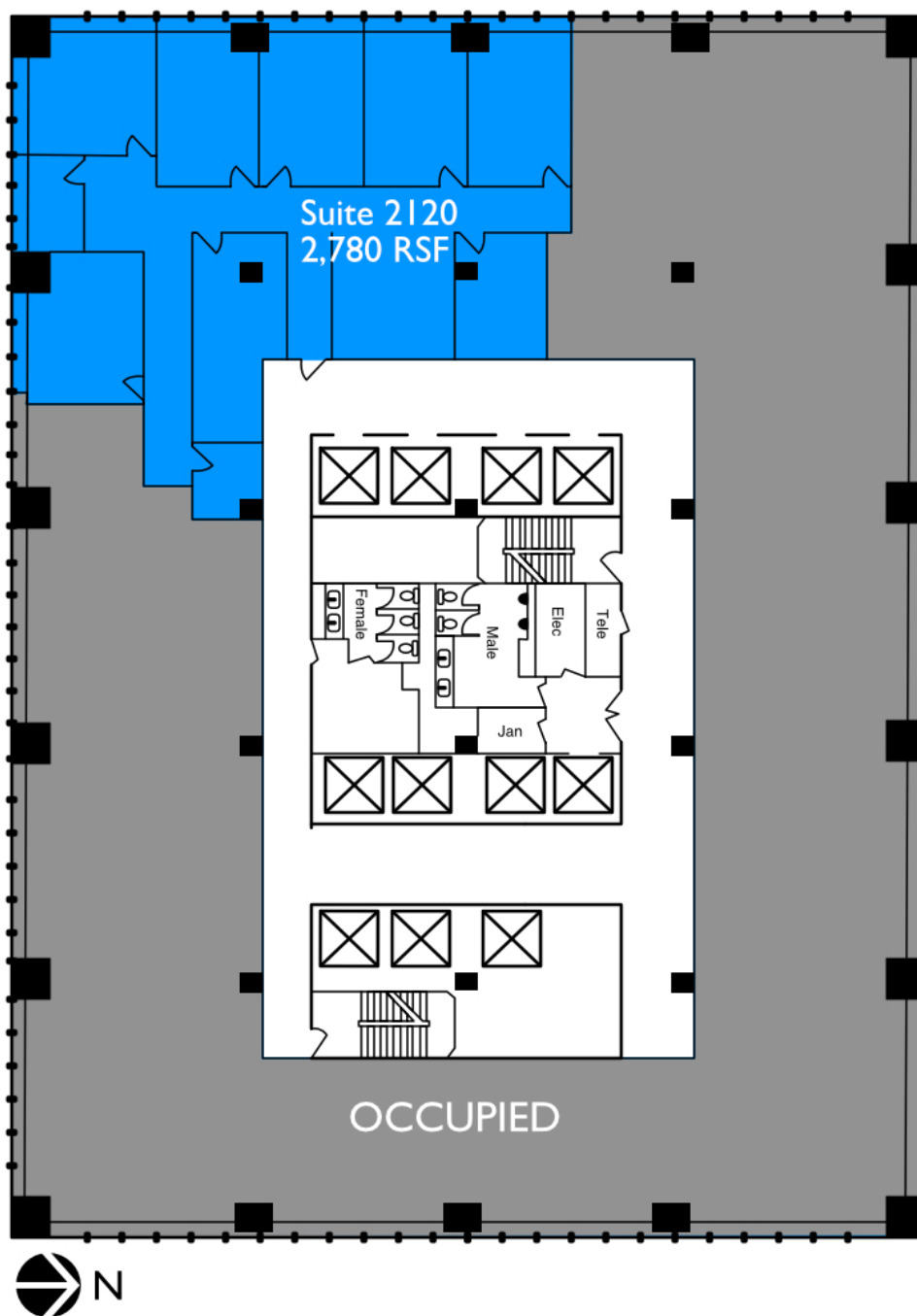


TRE DUPUY
405.239.1210
tdupuy@priceedwards.com
priceedwards.com

IAN SELF
405.239.1271
iself@priceedwards.com
priceedwards.com

BancFirst Tower

21st Floor

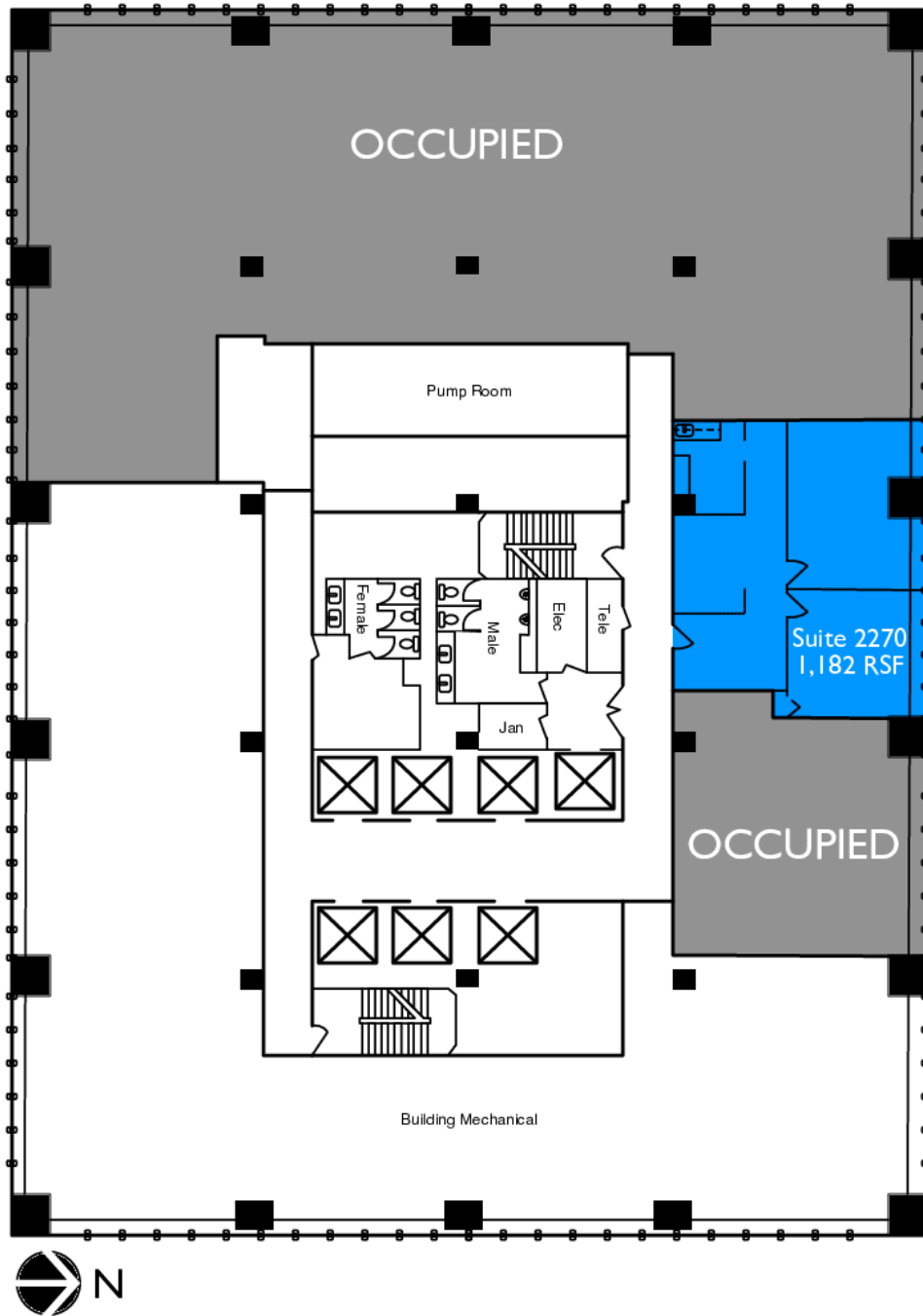


TRE DUPUY
405.239.1210
tdupuy@priceedwards.com
priceedwards.com

IAN SELF
405.239.1271
iself@priceedwards.com
priceedwards.com

BancFirst Tower

22nd Floor



TRE DUPUY
405.239.1210
tdupuy@priceedwards.com
priceedwards.com

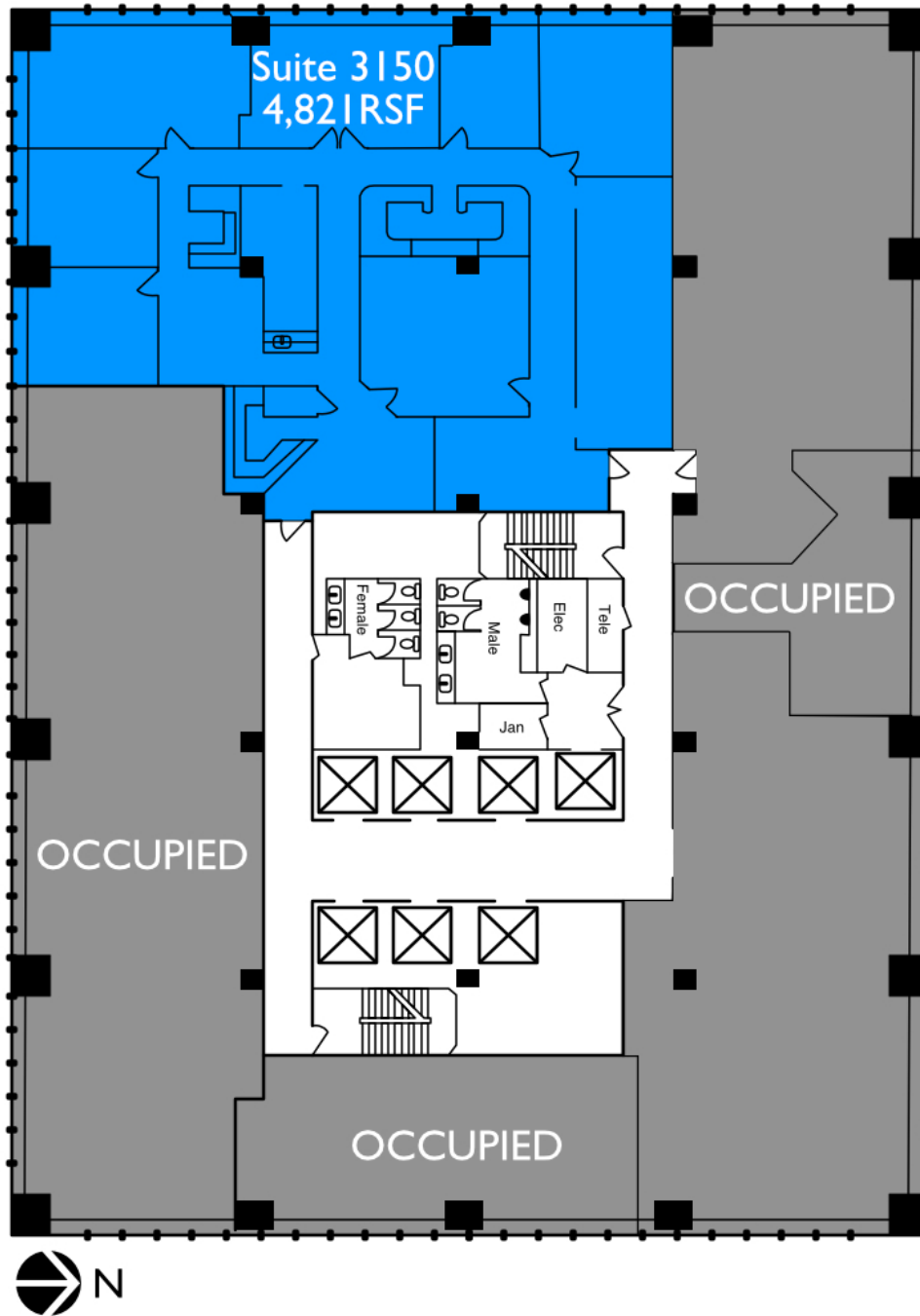
IAN SELF
405.239.1271
iself@priceedwards.com
priceedwards.com

BancFirst Tower

100 N Broadway Ave., Oklahoma City, OK 73102

BancFirst Tower

31st Floor

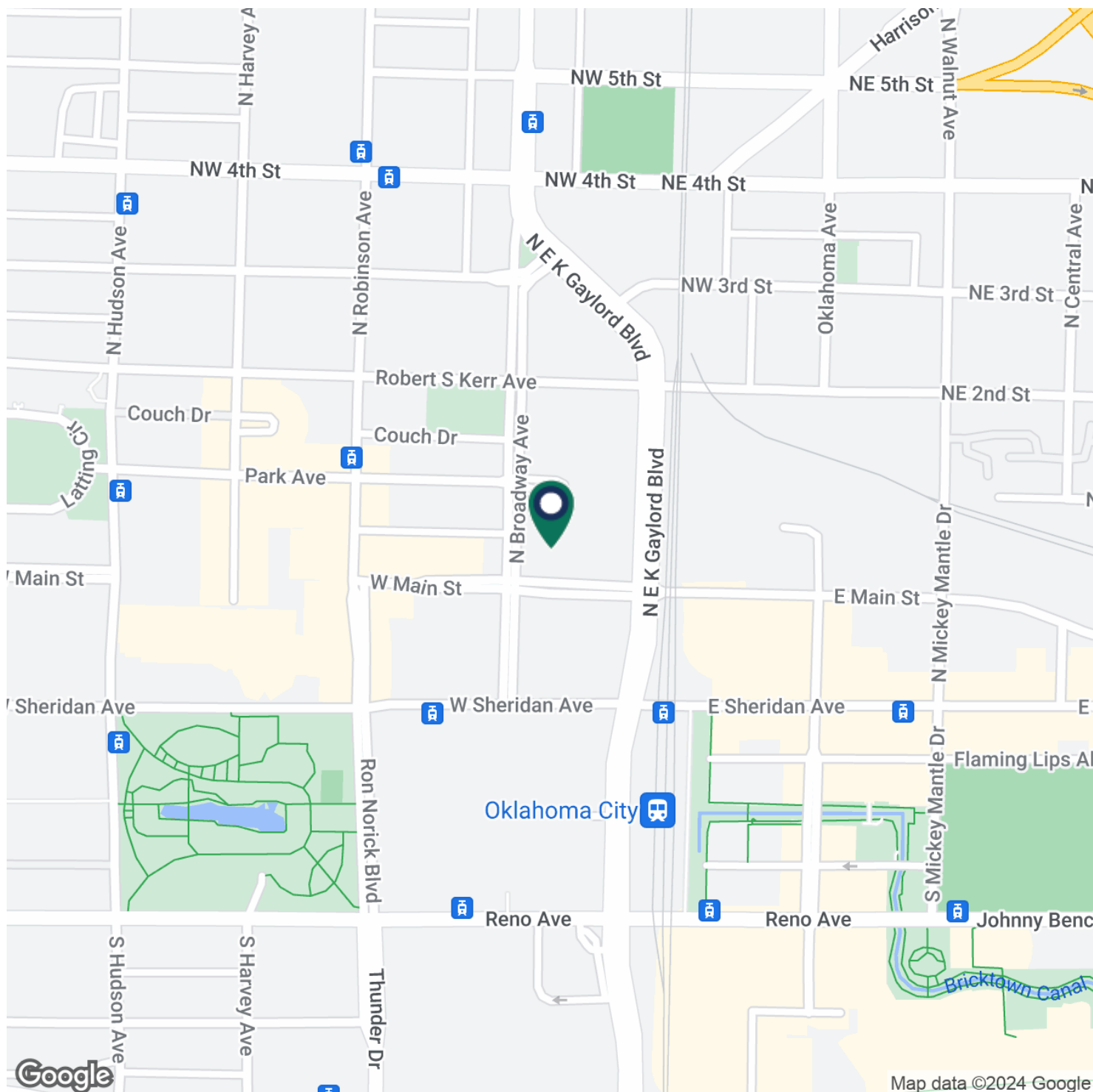


TRE DUPUY
405.239.1210
tdupuy@priceedwards.com
priceedwards.com

IAN SELF
405.239.1271
iself@priceedwards.com
priceedwards.com

BancFirst Tower

100 N Broadway Ave., Oklahoma City, OK 73102



TRE DUPUY
405.239.1210
tdupuy@priceedwards.com
priceedwards.com

IAN SELF
405.239.1271
iself@priceedwards.com
priceedwards.com